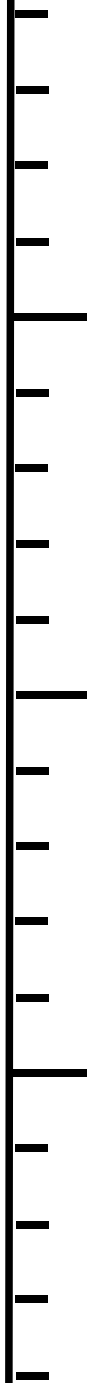
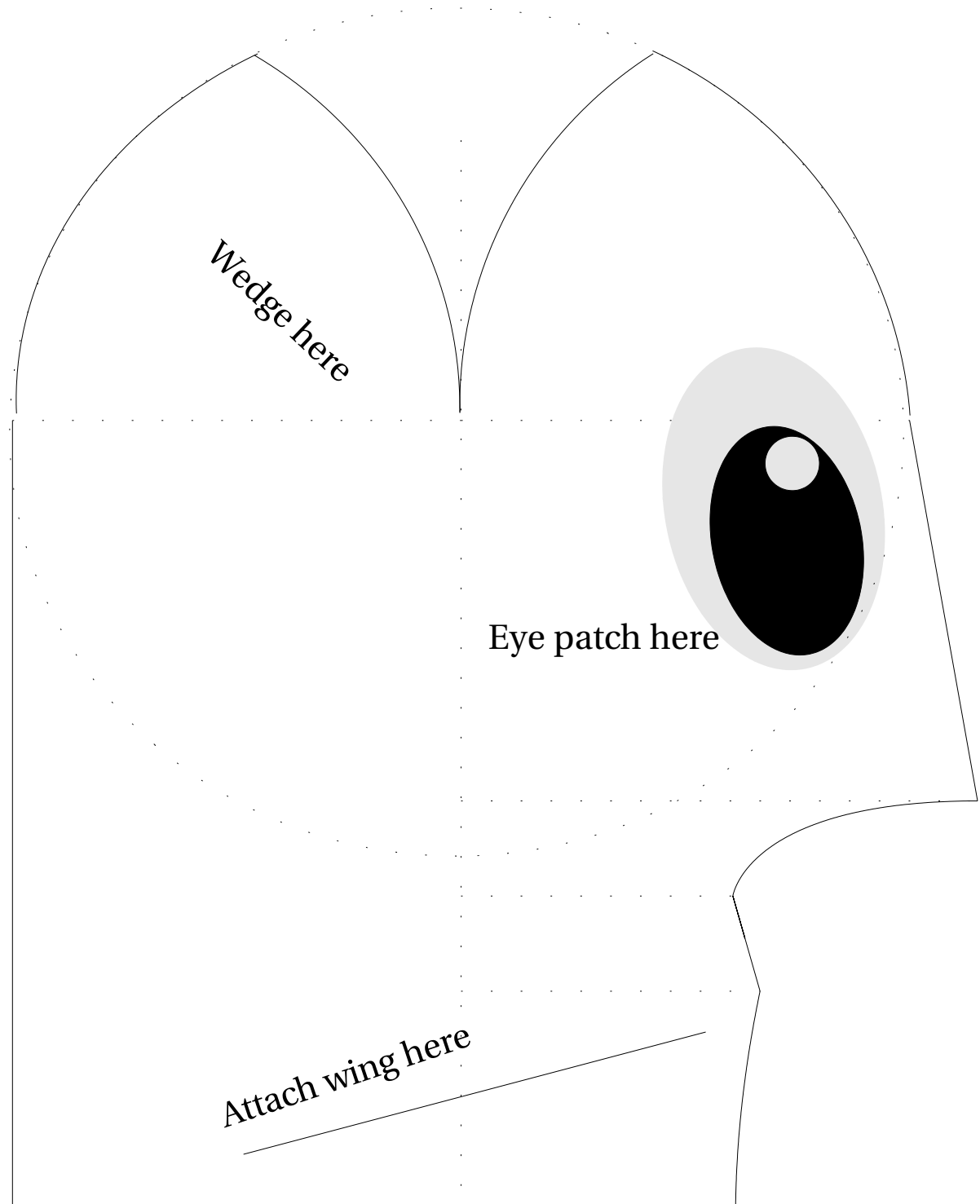


0 cm



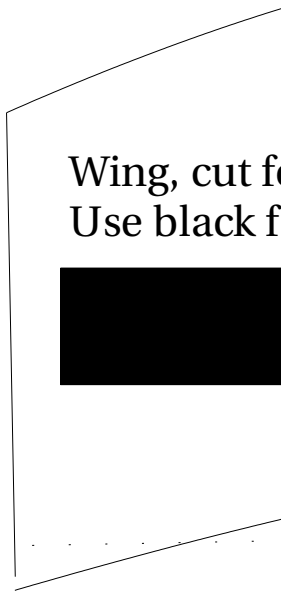
10 cm



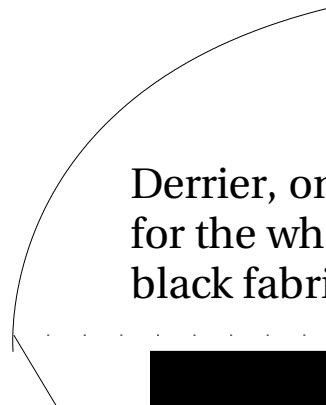
Wedge here

Eye patch here

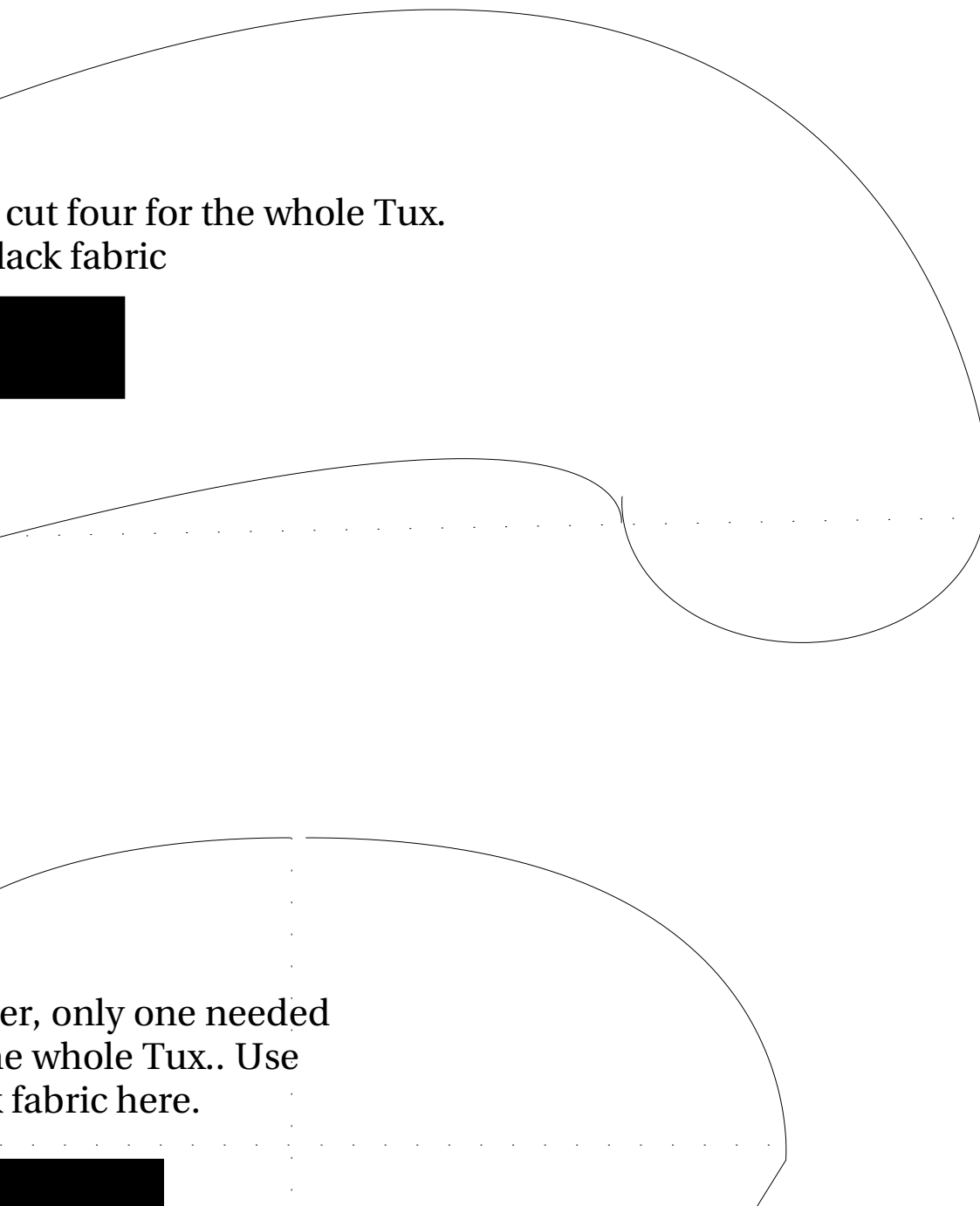
Attach wing here



Wing, cut f  
Use black f



Derrier, on  
for the wh  
black fabri



cut four for the whole Tux.  
black fabric

er, only one needed  
e whole Tux.. Use  
fabric here.

# Tux Pattern

<http://www>  
<mailto:joe>

The whole Tux is vertically symetric. So here  
You learn how to make one half. The other half  
is just the mirror of this one here.  
There are loads of tricks to sew this one properly th  
why some pictures are attached here.

To implement the eyes it would be best to use pair  
stiched patches and just attach them.

TODOS: Further development of the feet, they are  
in development status, they have to be improved

ern Version 0.5, 25. Oct. 2004

ww.free-penguin.org

erg.feuerhake@free-penguin.org

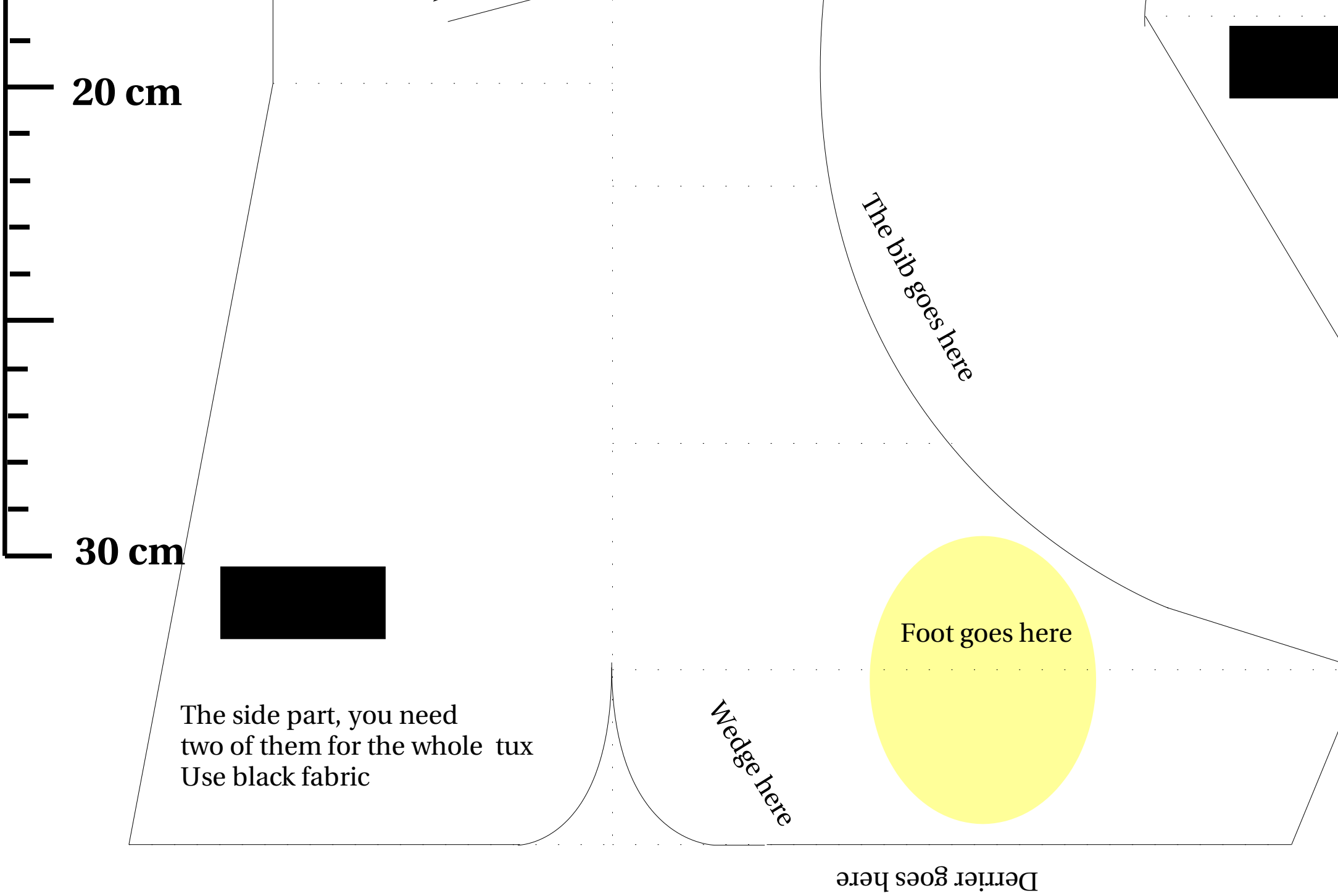
Changelog:

- enhancements in curvature of the head
- further enhancements of head and behinds
- put some cm- and inch-rulers to it, to give sewers an idea of the original size
- improved beak form
- color marks are put within the patches

erly that

e painted or

y are now  
ved



20 cm

30 cm

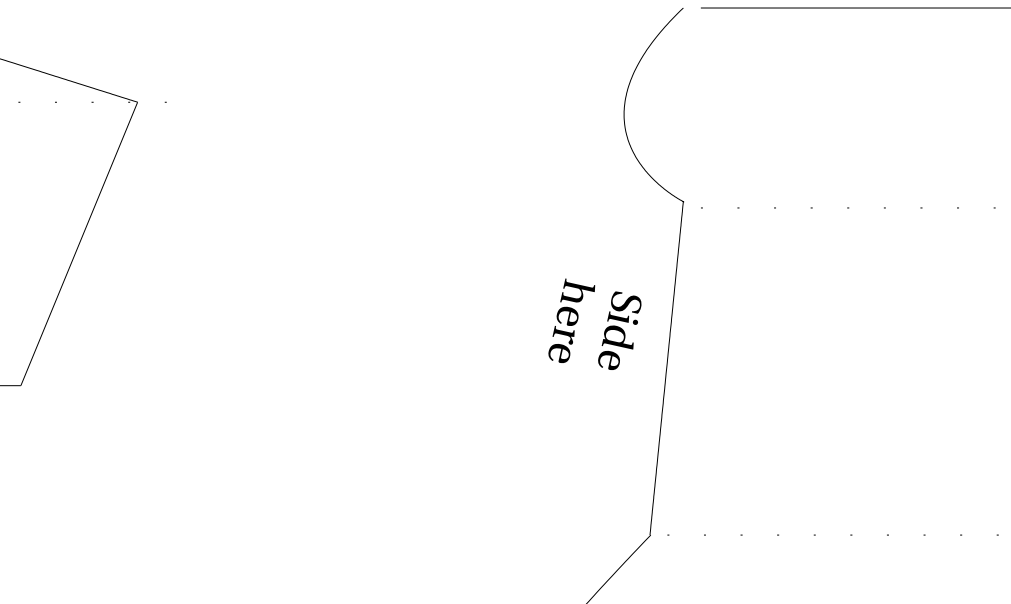
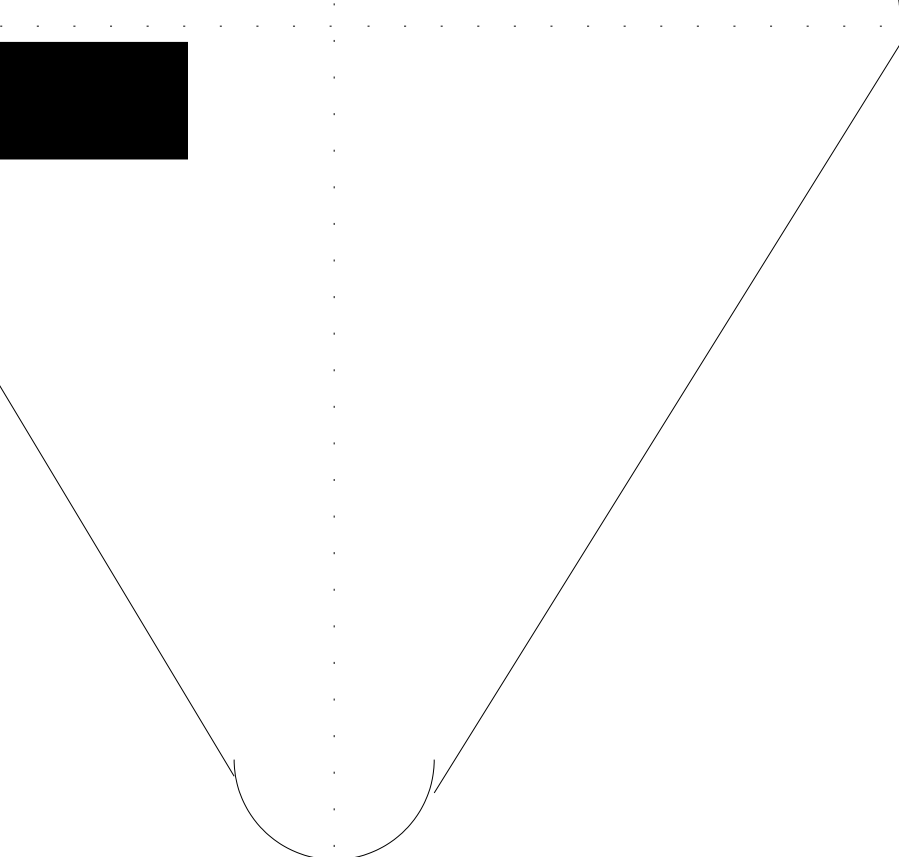
The side part, you need  
two of them for the whole tux  
Use black fabric

The bib goes here

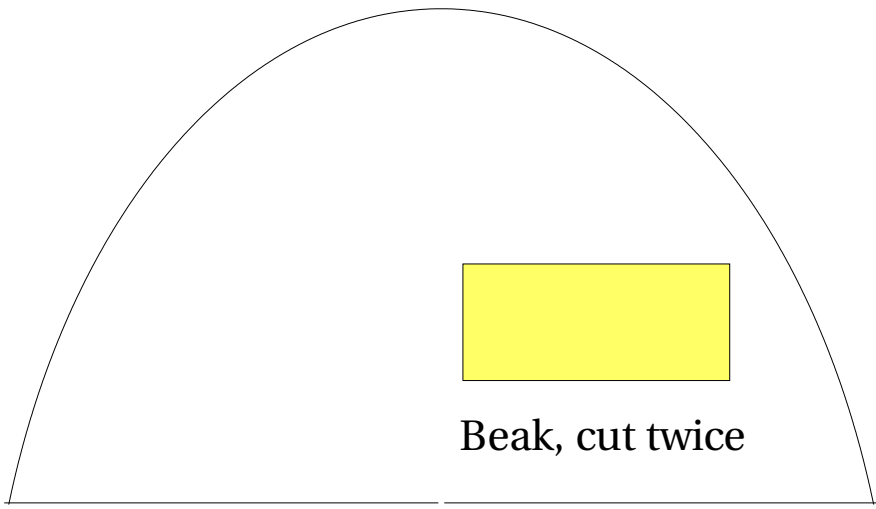
Foot goes here

Wedge here

Derrier goes here



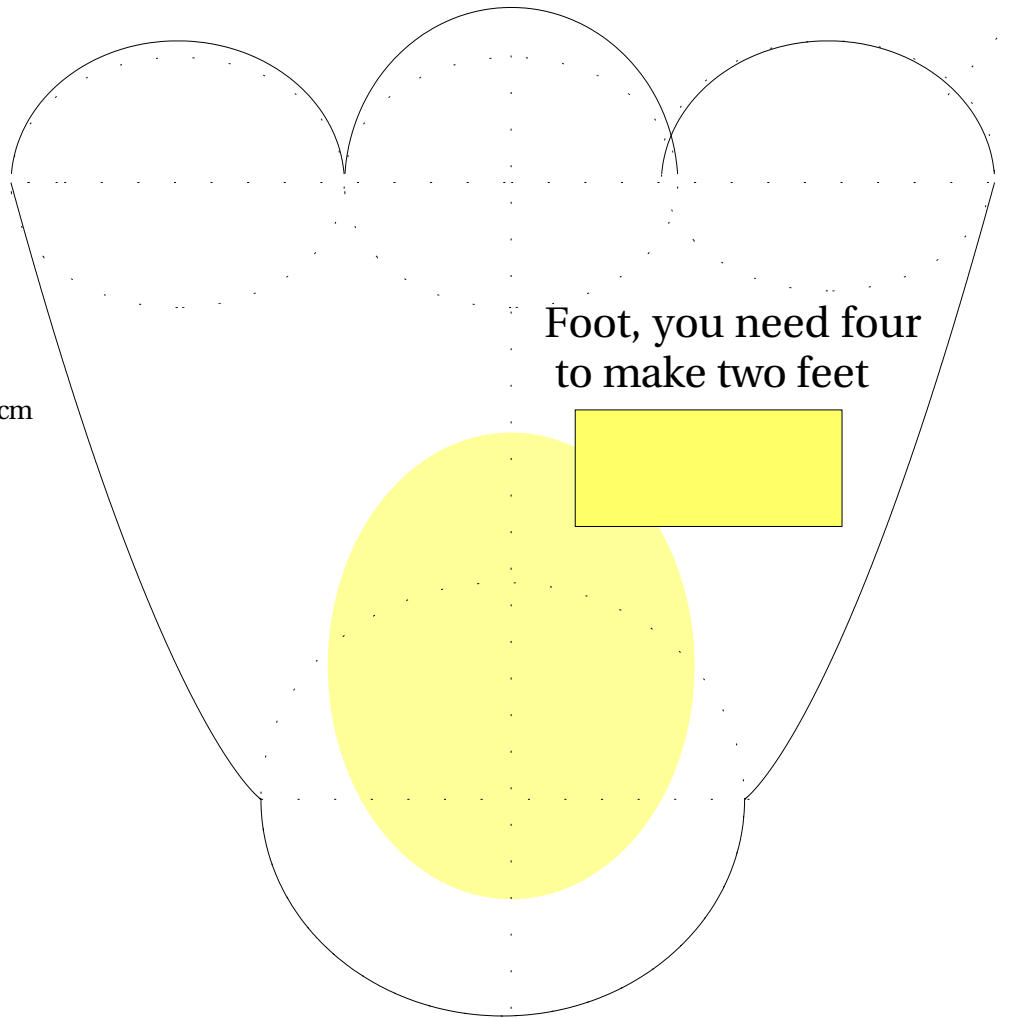




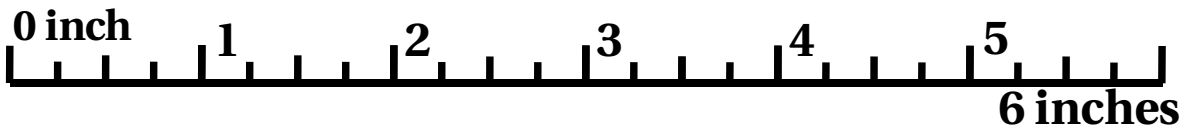
Beak, cut twice

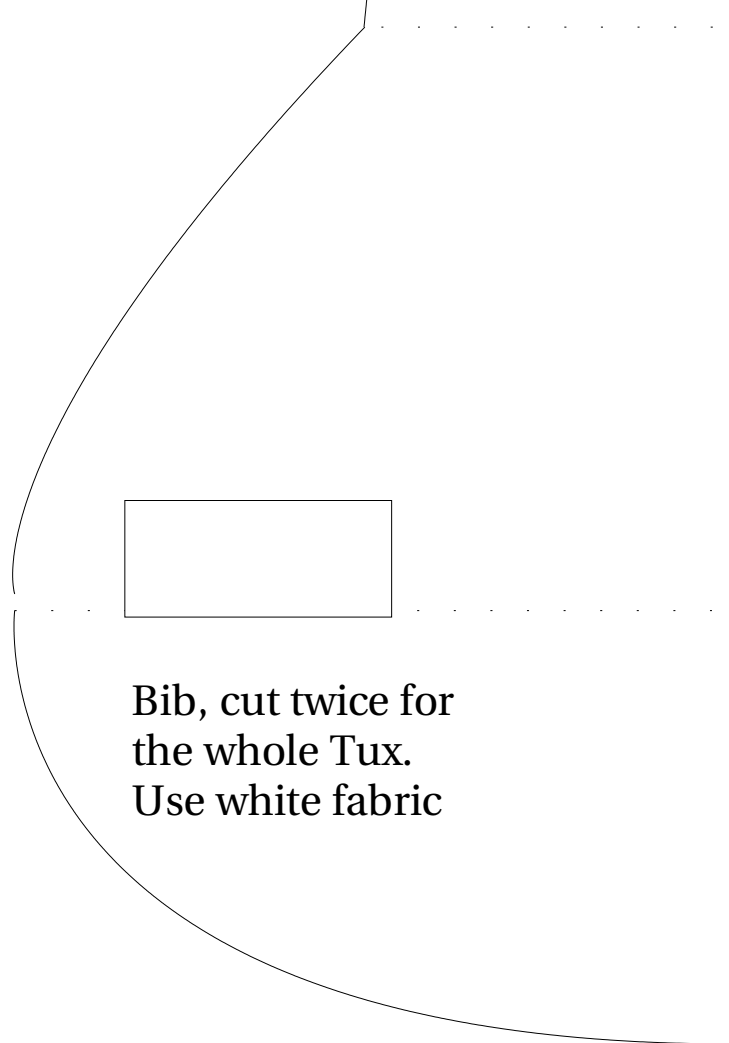
11,5cm

6,5cm



Foot, you need four  
to make two feet





Other bib here



License: This patterns





ns are released under GPL